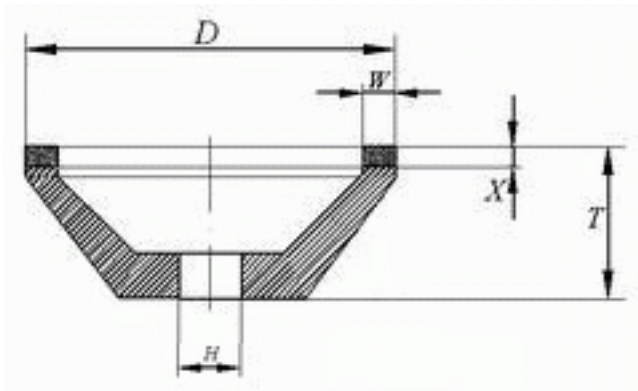


## Taper Cup Grinding-wheels

Written by YingLong

Sunday, 08 October 2006 15:32 - Last Updated Friday, 17 September 2010 17:18

---



Taper Cup wheels

Code:11A2

Binder:B.M(S.Q)

Size (mm)
-----------

Diamond/CBN Content	(carat/piece)
---------------------	---------------

## Taper Cup Grinding-wheels

Written by YingLong

Sunday, 08 October 2006 15:32 - Last Updated Friday, 17 September 2010 17:18

---

D

T

H

W

X

50

75

100

75

22

20

3

## Taper Cup Grinding-wheels

Written by YingLong

Sunday, 08 October 2006 15:32 - Last Updated Friday, 17 September 2010 17:18

---

2

2.99

4.48

5.97

75

23

20

3

3

4.48

6.72

8.96

## Taper Cup Grinding-wheels

Written by YingLong

Sunday, 08 October 2006 15:32 - Last Updated Friday, 17 September 2010 17:18

---

75

24

20

3

4

5.97

8.96

11.94

75

22

20

6

## Taper Cup Grinding-wheels

Written by YingLong

Sunday, 08 October 2006 15:32 - Last Updated Friday, 17 September 2010 17:18

---

2

5.72

8.58

11.45

75

23

20

6

3

8.85

12.88

17.17

## Taper Cup Grinding-wheels

Written by YingLong

Sunday, 08 October 2006 15:32 - Last Updated Friday, 17 September 2010 17:18

---

75

24

20

6

4

11.45

17.17

22.89

125

25

32

10

## Taper Cup Grinding-wheels

Written by YingLong

Sunday, 08 October 2006 15:32 - Last Updated Friday, 17 September 2010 17:18

---

2

15.90

23.86

31.69

125

26

32

10

3

23.86

35.77

47.69

## Taper Cup Grinding-wheels

Written by YingLong

Sunday, 08 October 2006 15:32 - Last Updated Friday, 17 September 2010 17:18

---

125

27

32

10

4

31.79

47.69

63.59